

WELCOME

Meeting Purpose

Come learn how Kittitas County is updating its Comprehensive Plan and how it guides growth, housing, transportation, and more over the next 20 years. Share what you value most and help shape the future of your community.

How to Participate

Visit each station to learn more about the subarea plan and *share your ideas* with the project team.

Station 1: Project Background

Learn about the comprehensive plan and why it matters.

Station 2: Housing and growth

What should we consider as growth occurs?

Station 3: Facilities and Services

What resources or infrastructure are needed?

Station 4: Climate and resilience

How should the County prepare for natural hazards?



Full Survey Here!
Scan the QR code to take the full survey and help us plan for the future.

What is a Comprehensive Plan?

The Comprehensive Plan includes goals, policies, and actions to guide population, housing and job growth for the next 20 years and are supported by land use and zoning regulations that manage how and where growth occurs. The Growth Management Act (GMA) requires counties in Washington State to create 20-year plan for population growth, housing, and jobs to ensure sustainable and coordinated development between cities and counties.



Timeline

The Comprehensive Plan update and development regulations update is expected be completed by June 2026.

Community Engagement

The County is committed to providing continuous community engagement throughout the Comprehensive Plan update. Check the project website at www.kittitascounty2026.com for updates at any time or sign up for the County's newsletter to receive updates on the project.



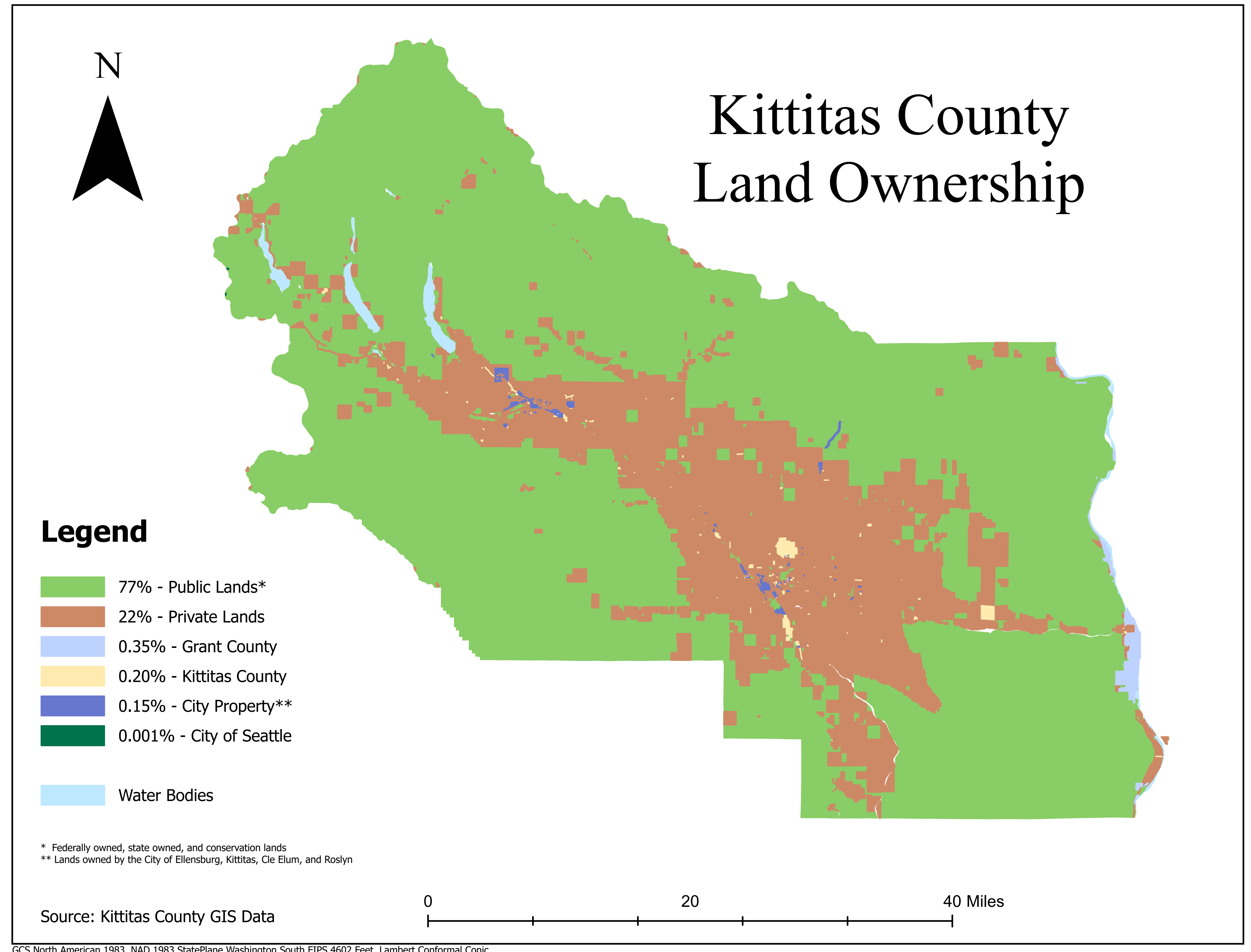
Full Survey Here!
Scan the QR code to take the full survey and help us plan for the future.

What is changing?

Unincorporated Kittitas County is projected to grow by 7,280 people and need 1,423 new homes by 2046.

Where will this happen?

The County has limited available land to accommodate growth in the unincorporated county. Approximately 74% of the County's lands are natural resource lands. Natural resource lands are a combination of federal lands, state lands, and other publicly owned lands.



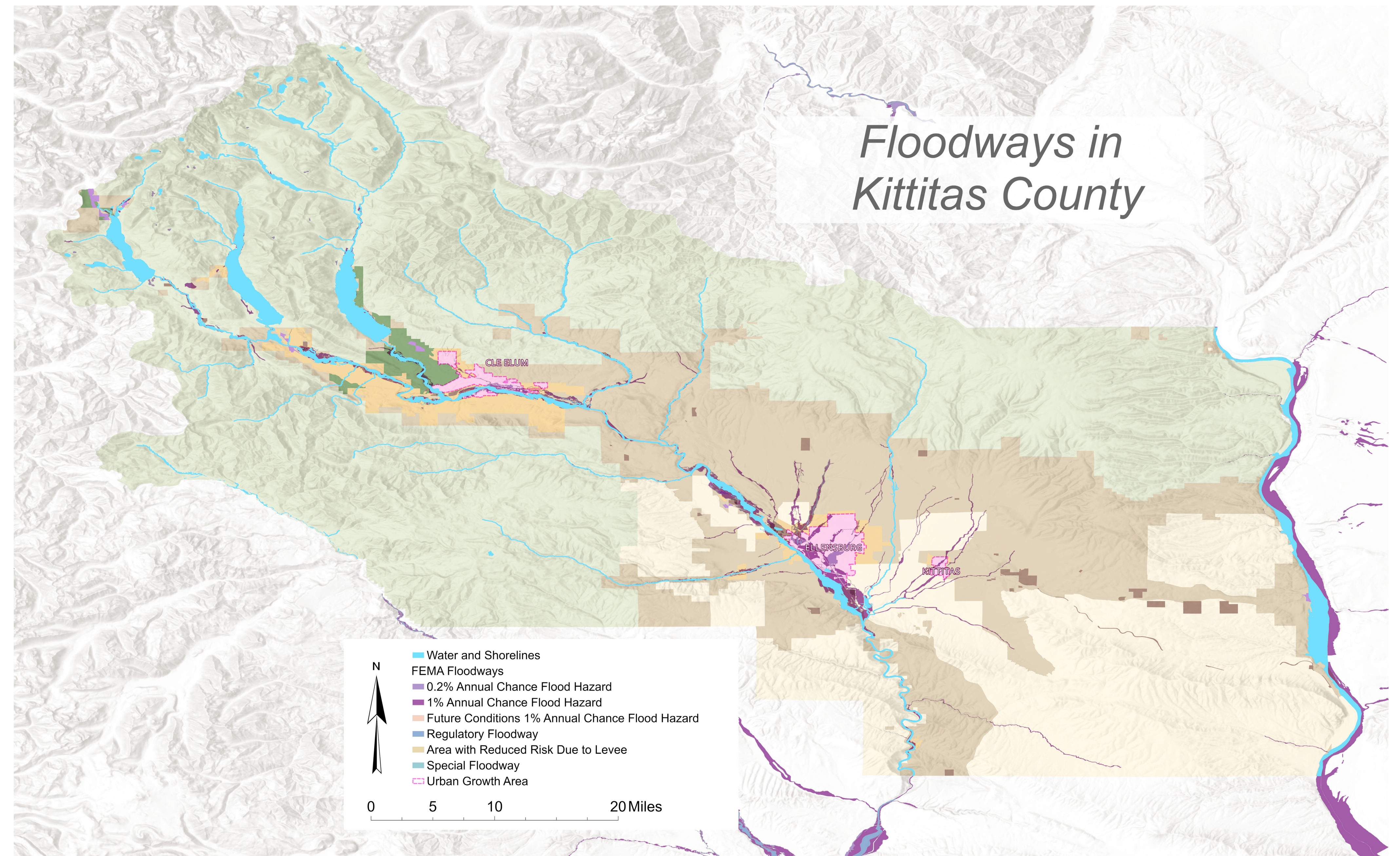
Full Survey Here!
Scan the QR code to take the full survey and help us plan for the future.

What is changing?

As of 2021, the County is required to plan for the protection from and mitigation of potential natural hazards. State data shows that some parts of the County could be impacted by:

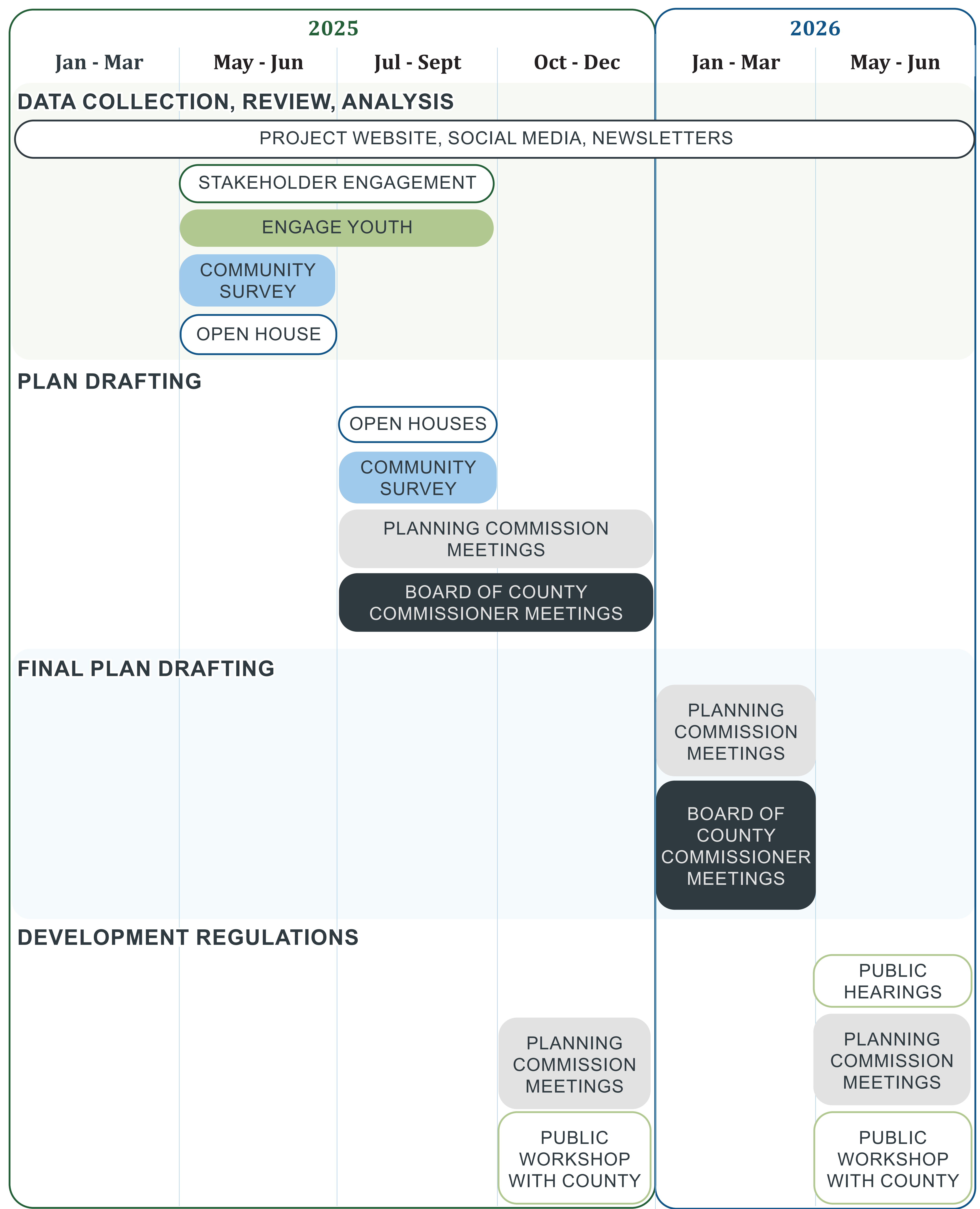
- Wildfire
- Drought
- Flooding/ Extreme Precipitation
- Extreme Heat


The County will be required to add a new chapter to the Comprehensive Plan to address each of these potential hazards and protect any assets that may be vulnerable to them.



Full Survey Here!
Scan the QR code to take the full survey and help us plan for the future.

Comprehensive Plan Update Timeline

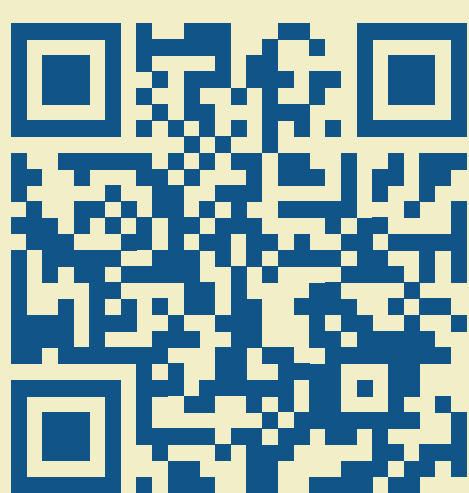




Full Survey Here!
Scan the QR code to take the full survey and help us plan for the future.

What parts of your community are important to protect as the County grows with more homes and jobs?

Write your thoughts or ideas below.



Full Survey Here!
Scan the QR code to take the full survey and help us plan for the future.

What is your vision for the County or your community over the next 20 years?

Write your thoughts or ideas below.



Full Survey Here!
Scan the QR code to take the full survey and help us plan for the future.

What resources, infrastructure, or services should be prioritized as the County grows over the next 20 years?

Write your thoughts or ideas below.



Full Survey Here!
Scan the QR code to take the full survey and help us plan for the future.

Are you concerned about wildfire or flooding impacting your community? What impacts are you concerned about?

Write your thoughts or ideas below.

FUNDED BY WASHINGTON'S

**CLIMATE
COMMITMENT
ACT**



Full Survey Here!
Scan the QR code to take the full survey and help us plan for the future.